

# BLAXTAIR: PEDESTRIAN / MACHINERY ANTI-COLLISION CAMERA

2022



BLAXTAIR®

- **Product Name:** BLAXTAIR Pedestrian / Machinery Anti-collision camera
- **Code:** PA20-020
- **Product Image:**





- **Core Functions:**

- Enhances safety, working conditions & productivity
- Protects against the risk of people/vehicle collisions

- **Technology Used:**

- Using Artificial Intelligence (AI) technology, distinguishes a person from an obstacle/object and alerts the driver to the danger in real time





## ○ Key Improvement in Construction Process:

- Safety

## ○ Job References:

- (1) Project: CKR (Dragages-Bouygues TP)
  - Location: Ho Man Tin
  - Work Process: Adoption
  - Year: 2021
- (2) Project: Alliance (Anderson Concrete Limited)
  - Location: Hung Hom
  - Work Process: Adoption Year: 2021
- (3) Project: Cha Kwo Ling – Trunk Road T2 (Dragages - Bouygues TP)
  - Location: Kowloon Bay
  - Work Process: Adoption
  - Year: 2021
- (4) Project: Dao Kee Construction Company Ltd
  - Location: Sheung Wan
  - Work Process: Trial
  - Year: 2021





- **Core Technology:**

- Proximity Detection Solution enhances safety and productivity by using Blaxtair's technology and products to identify person and obstacle/object nearby an operating truck. It's a real-time monitoring system that alerts the truck's driver to the danger without unnecessary alarms. The aims of using this solution is to avoid zero accident on any industrial sites.

- **First Launch Date:** 2021





## Enhanced people safety

Differentiates pedestrians and obstacles



## Highly robust

Operational in harsh environments



## Increased productivity

Only triggers relevant alerts



## Easy to install

Plug&Play system



## Better working conditions

Avoids nuisance alarms and alarm fatigue



## Flexible

Compatible with all types and brands of industrial vehicles

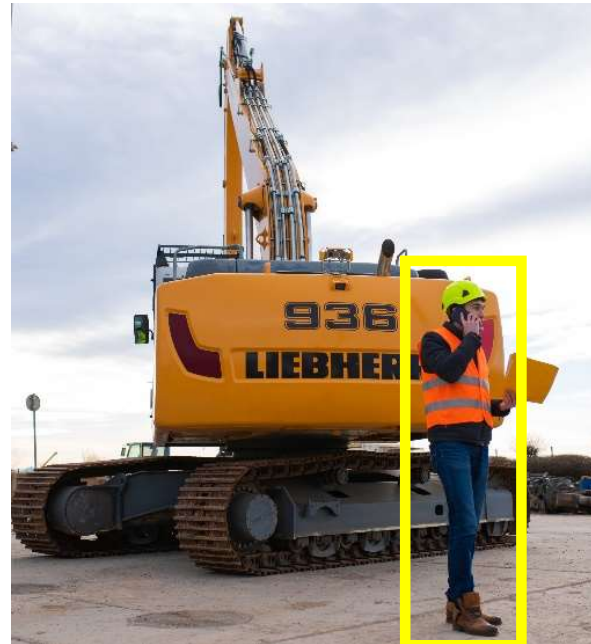


## Cost savings

No costs due to work stoppages, workplace accidents or fatalities

# CO-ACTIVITY GENERATES RISKS

Of people/vehicle collisions





① **Blaxtair captures 3D images:**  
The stereoscopic sensor looks after the area within its field of view, especially in the vehicle's blind spots.



② **Blaxtair detects:**  
The processing unit analyses the captured images, recognises and localises people in real time, thanks to artificial intelligence algorithms.

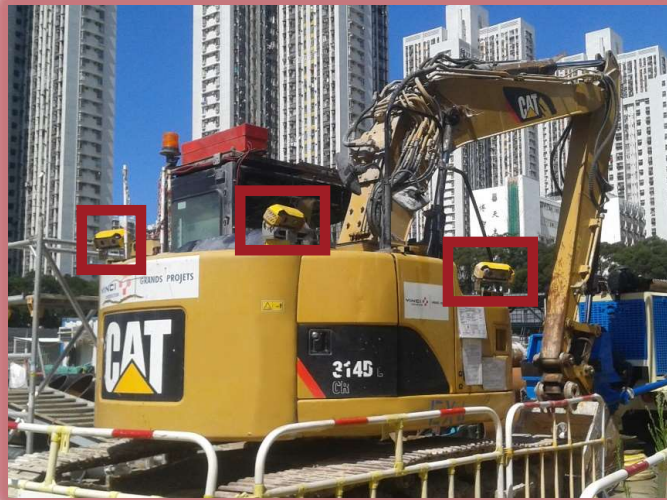


③ **Blaxtair alerts:**  
7" color LCD display or LED/Buzzer alerts the driver through visual and audible alarms if a person is detected in the defined danger zone.





# CIVIL WORKS



# CIVIL WORKS



**THANK YOU  
FOR YOUR  
ATTENTION**

---



**GEAR-UP**  
MATERIALS

Antoine NOURISSON  
[anourisson@gearupmaterials.com](mailto:anourisson@gearupmaterials.com)  
Tel HK: +852 6196 3369

**BLAXTAIR®**