

*Supplier : Sanyo Motors*

*Product : Copma cranes*

*Models : 820.8, 950.9, 1150.8, 1150.8J6, 2000.9*

## Product Presentation

**Core Function:** truck-mounted hydraulic crane to move materials from place to place

**Technology used:** Stability Control System

**Construction process involved:** handling important non-divisible loads (machine tools, building constructions materials, roofs for buildings , heavy goods etc.); Crane with JIB and Basket, for the maintenance of helical blades, network antennas, antennas for radio links, installation of escalators, air conditioners, etc.



# Product Presentation

**Key improvement in construction process :** improving safety in heavy material movement via Stability Control System which can continuously monitor and indicate the safe working load at different outrigger extension or load lifting condition of the crane on a real-time basis

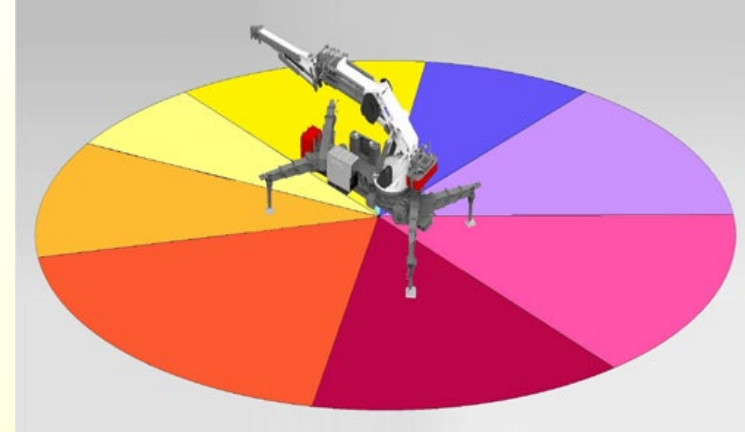
**Job reference:** worksites in Hong Kong, Kowloon, New Territories and Lantau Island since 2016



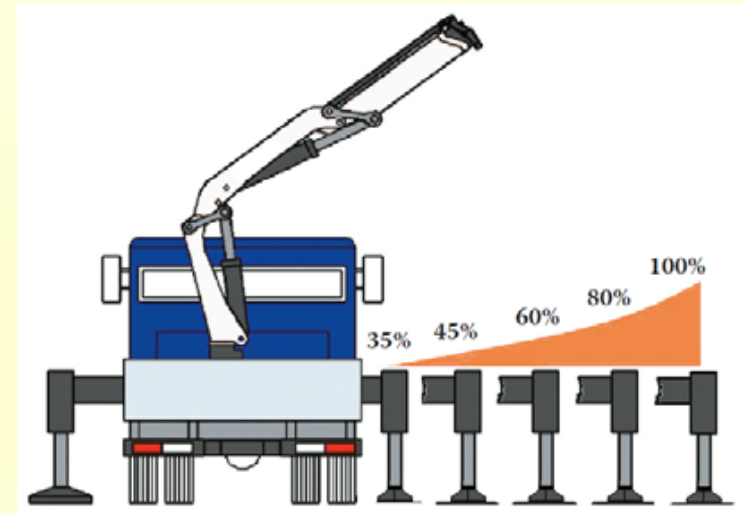
## Innovative Features

### **Core Technology : Stability Control System**

**(1) Crane Monitoring System (CMS)- monitors and controls 8 work sectors of work area for overload and lift speed**



**(2) Truck Electronic Stability System (TES)- monitors and controls the lifting capacity with interaction of the extension of outriggers**



# Innovative Features

## **Comparison with current practice:**

- **Product:** hydraulic cranes without Truck Electronic Stability System (TES)
- **Technology:** just monitors and indicates the safe working load without interacting with outrigger extension
- **Benefit:** safer with TES even operated by less experience operator to minimize the risk of truck overturn

## **Comparison with similar pre-approved list products:**

- **Product:** Fassi 1150RA.2.28 hydraulic crane
- **Technology:** Fassi Stability Control
- **Benefits:** Copma cranes provide the same lifting capacity and safety level with simpler system configuration and less costly

**First launch date:** 2016, latest version available in 2021



## Adoption Example

**Project for illustration:** loading concrete slabs on a truck at a site by Copma 1150 crane in New Territories, 2021



## Benefit-Improved Safety

### Improved safety by Stability Control System:

Crane Monitoring System (CMS)- monitors different sectors of work area for overload. System warns by light and sound, and locks the operation if it detects overload.

Photo below: Crane is lifting at too much extension

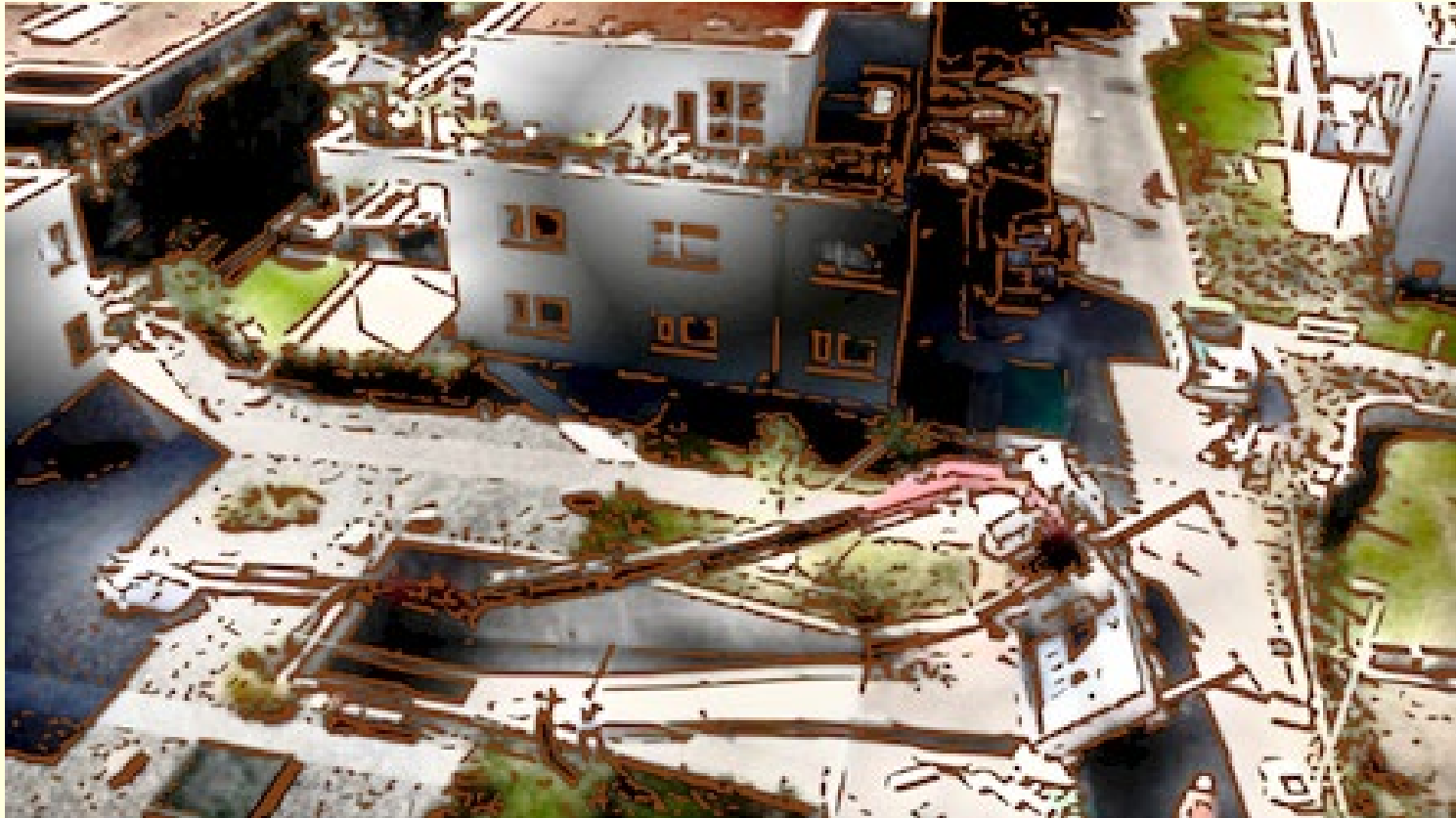
Photo at right: warning light at load limit



# Benefit-Safety

## Problem without Stability Control System:

**Without Truck Electronic Stability System (TES), crane cannot monitor and control the lifting capacity upon interacting with the extension of outriggers, that means insufficient support. Accident (truck tipping) happens under optimistic load estimation at low track stability just by driver's evaluation.**





# Thank you!



三洋車行

展銷場：新界元朗錦田大馬路市中心(錦田郵政局附近)

電話：(852) 2390 0433 傳真：(852) 2988 8121

電郵：[sanyomotors@yahoo.com.hk](mailto:sanyomotors@yahoo.com.hk)